

FEATURE RECORD

FEATURE NO. 1

RECORDER KOCH

SITE NO. SA 26-1

DATE: 5/3/76

LOCATION: excavation unit: TEST PIT A

size & approximate location: 3/4 meter x 1/3 meter
NW quadrant

Depth from surface: top: 0.59 m From Datum: top: 2.10 m
base: 0.72 m base: 2.23 m

DEFINITION: LIGHT BROWN ORANGE
AREA FLECKED WITH CHARCOAL
AND BRICK

ASSOCIATED MATERIAL:

1. Field Specimen nos.: 5
2. Other Features: NONE
3. Other: NONE

MATRIX & STRATIGRAPHY:

ORIGINATES IN LEVEL 4 &
ENDS IN LEVEL 5.

SURROUNDED BY LIGHT BROWN
SHELL-FLECKED MIDDEN

MAP REFERENCE: #2

PAGES IN NOTES: 9-10

PHOTOGRAPHS: NONE

SKETCH ON REVERSE SIDE



TEST PIT A

NW

NE

FEA #1

SW

SE



FEATURE NO. 2

RECORDED

106N106E 2/50

LOCATION: excavation unit 106N103E, 103N106E

size & approximate location 1m x 3m

SIDE NO. SA 26-1

DATE 5-18-76

SW corner of sq.
to ctr of E wall

depth from surface: top $\frac{.33M}{.43M}$
base $.51M$

depth from datum: ton 1.97 - 0.9 minus
base 2.70 - 7 footing
base 2.18

DEFINITION: Small cut coquina blocks (pass paving stones) w/ facing of whole oyster shell & lime mortar. Coquina pass is topped by layer of mortar.

ASSOCIATED MATERIAL:

MATRIX & STRATIGRAPHY:

originates in level 4. Surrounded by light brown rubble & shell-flecked midden

iii) Field Specimen nos.: 17

2) Other Features:

3) Other:

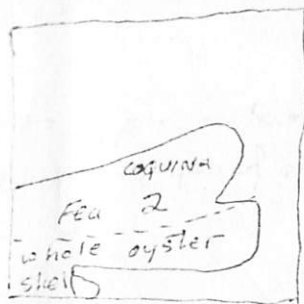
MAP REFERENCE: 3, 6, 9

PAGES IN NOTES: 14, 15, 16, 66, 38, 79

PHOTOGRAPHS: #1, #2,

NOTE: Photo. at top of pagina
" blocks taken: exposed under mortar

SKETCH ON REVERSE SIDE



103N
106E



120N
103E

FEATURE RECORD

FEATURE NO. 3

RECORDER Bonath

SITE NO. SA-26-1DATE: 5-3-76LOCATION: excavation unit: □106N106E

size & approximate location: N central

Depth from surface: top; ~~0.43~~ 0.43 m
base: ~~0.99~~ 0.99 mFrom Datum: top; ~~2.07~~ 2.07 approx. 1 x 1 m
base: ~~2.63~~ 2.63DEFINITION: heavy concentration
of whole oyster shell, bone, ceramics with
a thin layer of light grey clay
topping it

MATRIX & STRATIGRAPHY:

Originates in Level 4 (45-60 cm)
4 is adjacent to N wall and
to Fea #2 on S. Level 4 soil
is light brown shell & rubble
flecked.

ASSOCIATED MATERIAL:

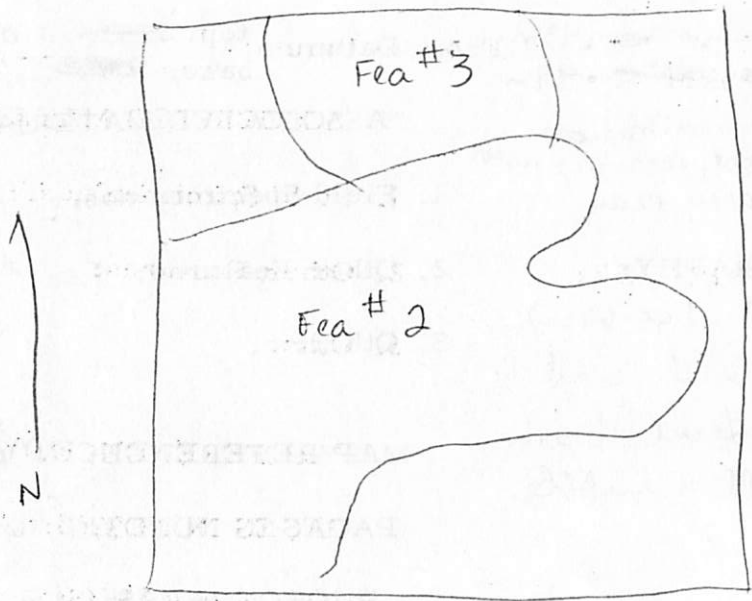
1. Field Specimen nos.: 16
2. Other Features: Fea. #2
3. Other:

MAP REFERENCE: Map #3

PAGES IN NOTES: 16-17

PHOTOGRAPHS: #3, #4

SKETCH ON REVERSE SIDE



706N
106E

FEATURE RECORD

FEATURE NO. 4

RECORDER

Poe

SITE NO.

SA-26-1

DATE

5/18/762 1/4 Mile x 1/2 M WLOCATION: excavation unit 106N 106Esize & approximate location in SE Quad of T

depth from surface: top

0.54

depth from datum: top

2.18

base

.85base E-2.41 / W-2.37

DEFINITION:

Tabby FortingShale & crushed agate shell mixed
together - possible tabby rubble
matrix

MATRIX & STRATIGRAPHY:

Interbedded by Areas A, D, G, K & O,
F & H. Underlying Zone 2 level 4
over Areas K, I, G, R, F & S

ASSOCIATED MATERIAL:

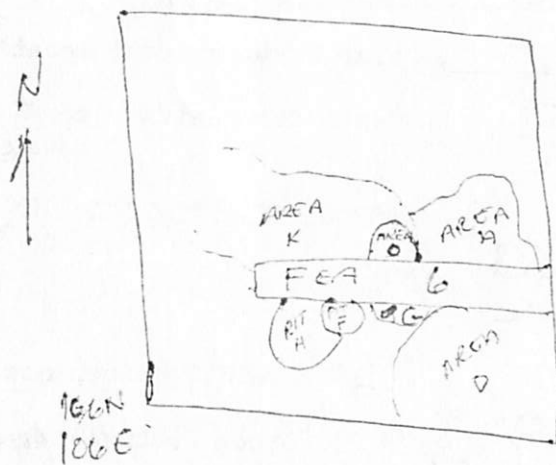
1) Field Specimen nos.: 512) Other Features: Areas A, D, G, K & OPITS & H

3) Other:

MAP REFERENCE: 5PAGES IN NOTES: p 20

PHOTOGRAPHS:

SKETCH ON REVERSE SIDE



FEATURE RECORD

FEATURE NO. 5

RECORDED Bonath

SITE NO. SA-26-1

DATE 5-7-76

LOCATION: excavation unit □ 106 N 103 E, size & approximate location 2m x .5m, center
 depth from surface: top ~~.45m~~ .35m depth from datum: top 1.94
 base .65m base 2.06
 of □ - N-S alignment

DEFINITION: possible wall footing -
 oyster shell & mortar mixture
 aligned N-S in square
 layer on ground and trench packed

MATRIX & STRATIGRAPHY: Originates
 at base of Zone I - intrusive
 into Zone II, Level 1,
 adjacent to Fea 2 on S
 & runs into N wall

ASSOCIATED MATERIAL:

- 1) Field Specimen nos.: 67
- 2) Other Features: Fea #2, 6 area D, C.
- 3) Other:

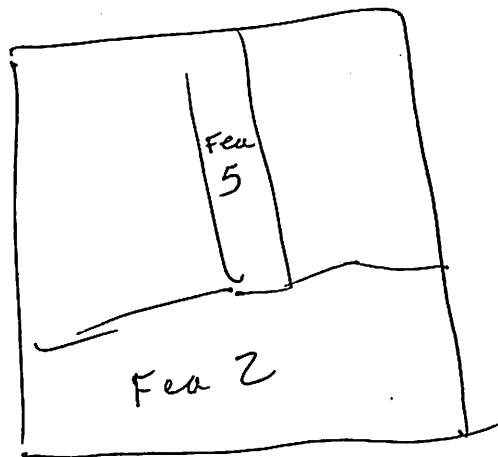
MAP REFERENCE: 6

PAGES IN NOTES: 36

PHOTOGRAPHS: #1, #2

SKETCH ON REVERSE SIDE

↑
N



106N
103E

FEATURE RECORD

FEATURE NO. 6RECORDER PoeSITE NO. SA-26-1DATE 5-18-74LOCATION: excavation unit 106N 106Esize & approximate location 2m x 1m NW quaddepth from surface: top 61m
base 1.04mdepth from datum: top 2.20
base - Low 2.47
High 2.36

DEFINITION:

Dark grey sandy soil w/ heavy ~~concentration~~
concentration of shell & bone

MATRIX & STRATIGRAPHY:

bordered by Zone II level 2, Feat 2 & 5,
& Feat 7.

below: Zone 2 level 2

above: sterile

Farnal bag has been contaminated
material from area D 1106N 103E

SKETCH ON REVERSE SIDE

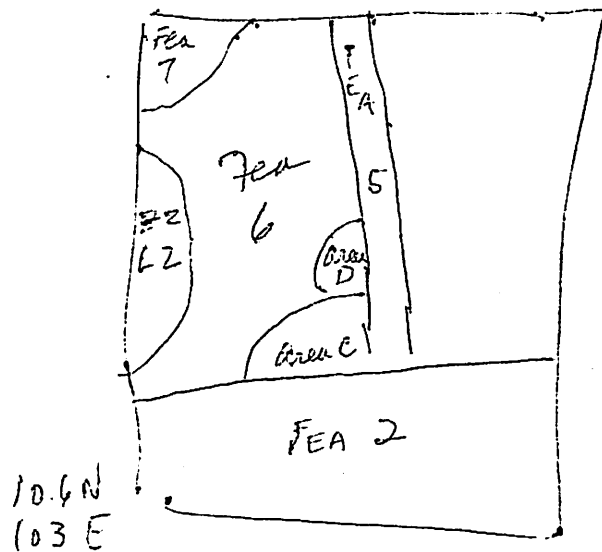
ASSOCIATED MATERIAL:

- 1) Field Specimen nos.: 60
- 2) Other Features: Feat. 7
- 3) Other: 2 & 5

MAP REFERENCE: 6PAGES IN NOTES: 51

PHOTOGRAPHS:

*
see notes on
page



after excavation this feature appears to have probably
 is a zero fill with several pits intruding (Fea 7, Area C, etc.)
 Fea 6 material is probably equivalent to Zone 2, and 4

FIELD NO. _____

STATION NO. 7

RECORDED

Huston

SHEET NO. SA 26-1

DATE 5/17/76

LOCATION: excavation unit 106N 103E

size & approximate location NE (214) R

depth from surface: top .72
base 1.44

depth from datum: top 2.12
base 2.85

DEFINITION:

Brown Soil w/ heavy concentration
of whole shell

CONTEXT & ORIENTATION:

Surrounded by Zone 6 (to SE)

Below Zone 1 & above sterile

ASSOCIATED MATERIAL:

1) Field Specimen nos.: 53

2) Other Features: 6

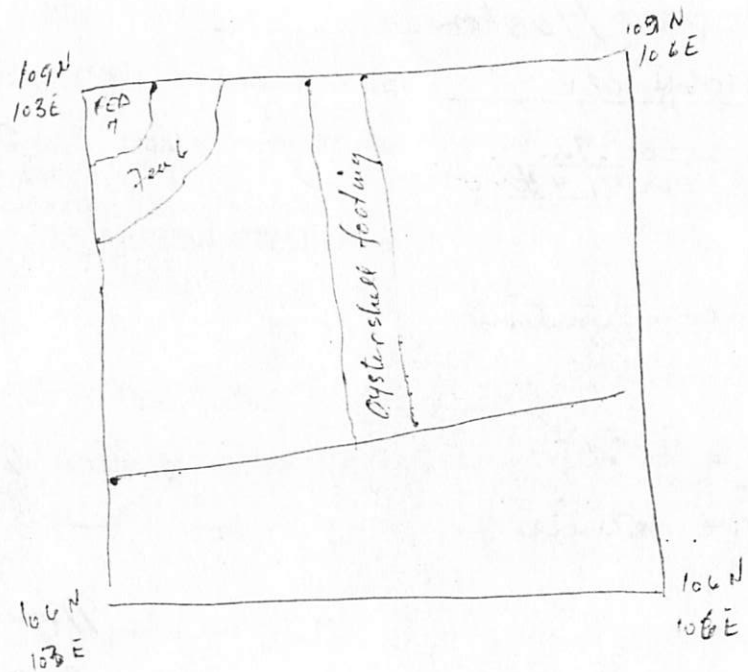
3) Other:

MAP REFERENCE: Map # 6

PAGE # IN VOLUME: Page 58

PHOTOGRAPHS:

EXTRACT ON REVERSE SLIP



FEATURE RECORD

FEATURE NO. ERECORDER P106N 103E106N 103E

LOCATION: excavation unit

size & approximate location in SW quad of Ddepth from surface: top 93 M
base _____depth from datum: top 2.51
base 260 (IN D 106N 103E)

DEFINITION:

Circular area of wash sand which
indents into SW corner of square

ASSOCIATED MATERIAL:

MATRIX & STRATIGRAPHY:

Below Feature 4

Surrounded by sterile

106N 103E this feature is partially
excavated as Area F - Area F - FS 194
could be combined with Feature 8

100' under Fea. 2 - new area disclosed

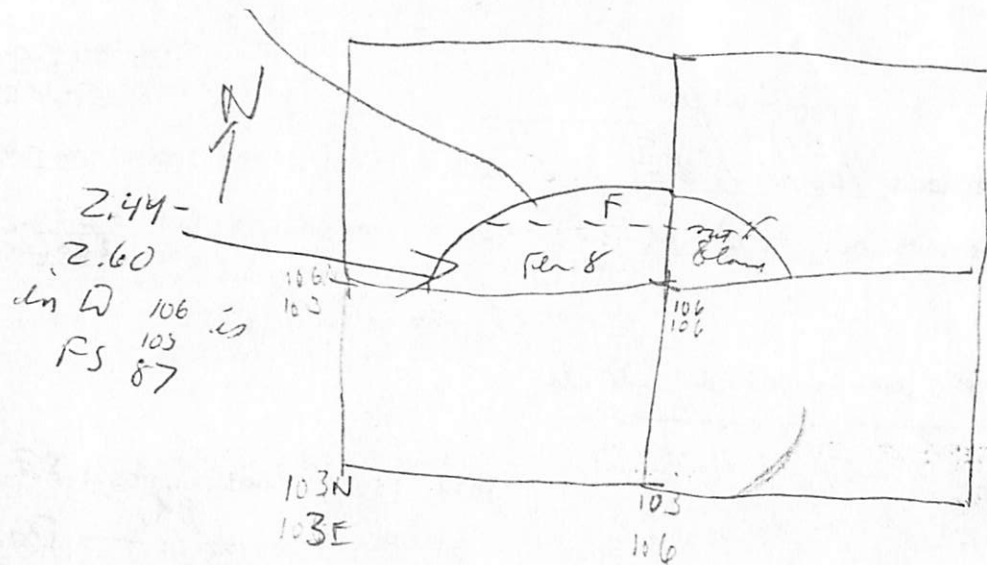
- 1) Field Specimen nos.: 87 (see volume)
94
- 2) Other Features: Fea. 13 in
corner of 106 103
- 3) Other: Area F, D 106N 103E

MAP REFERENCE: 8PAGES IN NOTES: 60, 85

PHOTOGRAPHS:

SKETCH ON REVERSE SIDE

area FS 94 2.16
2.60



ARTICLE NO. 9

EXCAVATION

Singleton

26-1

May 20, 1976

LOCATION: excavation unit D103N 106Z

size & approximate location 1.10 by 1.03

depth from surface: top 51 cm
base _____

depth from datum: top 2.10
base _____

located in NE
Quadrant

DEFINITION: 19th cent. Trash pit

ASSOCIATED MATERIAL:

MATRIX & STRATIGRAPHY: initiates near
the base of Zone I (.04 m) above
Zone II. Matrix to Top of Zone
2 toward east and Coquina
rubble to the south.

Field Specimen nos.: FS 70 - bottle

Other Features: FS 80 - undrained

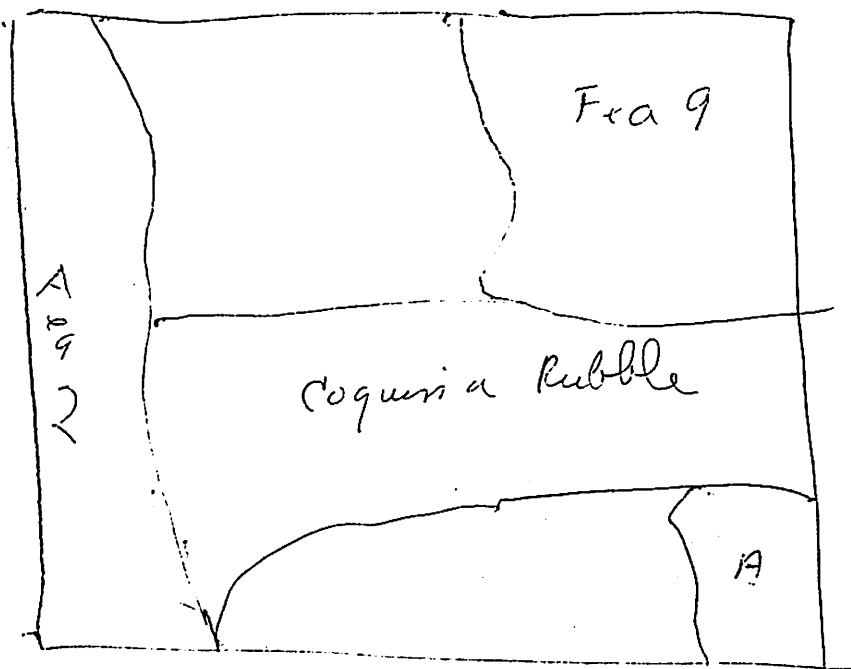
Color:

Map Reference: Map 9

PAGES IN REPORT: p. 71

PHOTOGRAPHS:

CLERK OF RECORDS



FEATURE RECORD

FEATURE NO. 10

RECORDER

SingletonSITE NO. 26-1DATE May 20, 1976LOCATION: excavation unit D106N103E, size & approximate location _____depth from surface: top .83 M
base _____depth from bottom: top 1.31
base _____DEFINITION: area of grey-
brown shell-flecked soil
Trash pit

ASSOCIATED FEATURES:

MATRIX & STRATIGRAPHY:

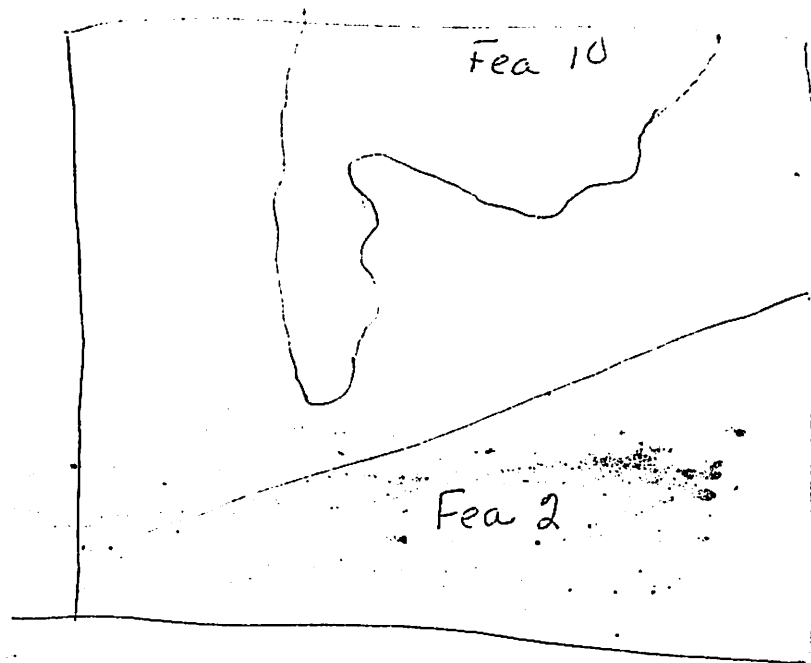
initiates at base of Zone II
level II in a leached
zone. Intrudes into level

1) Field Specimen nos.:

2) Other Features: Fea 2

3) Other:

MAP EXPLANATION: 6PAGE # OF DATA: 72OTHER: None



A N

RECORD NO.

FRAGMENT NO. 11

RECORDED

BOSTWICK

FILE NO. SA-26-1

DATE 26 MAY 76

LOCATION: excavation unit 103N 91E

size & approximate location S 1/4 OF SQ

depth from surface: top .25
base _____

depth from datum: top 1.79
base _____

DEFINITION: MASONRY COQUINA
STRUCTURE - 3 COINTEL

ASSOCIATED MATERIAL: possibly Fe 2
in D's 106N/106E, 106N/103E

NOTES & STRATIGRAPHY: extends from
humus line to sterile soil

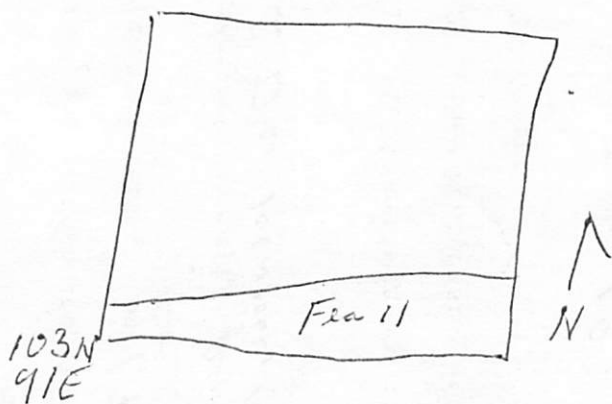
- 1) Field Specimen nos.: NONE
2) Other Features:
3) Other:

MAP REFERENCE: 10, SR# 4

PAGES IN NOTES: 79

PHOTOGRAPHS: 2 - color

SKETCH ON REVERSE SIDE



FIELD NO.

12

RECORDED

BOSTWICK

SHEET NO. SA-26-1

DATE 26 MAY 76

LOCATION: excavation unit 103N 91E

size & approximate location NE 1/4 OF SQ

depth from surface: top 90
base 141

depth from datum: top 2.37
base 2.88

DESCRIPTION: Dark gray rubble & shell flecked ppt

ASSOCIATED WITH LAB PIT A, PIT B,
PIT C, PIT D

MATRIX & STRATIGRAPHY: continues into
sterile zone

1) Field Specimen nos.: 90

2) Other Features:

3) Other:

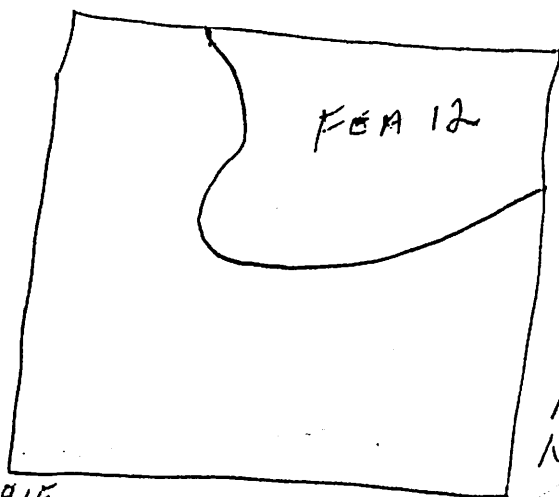
NOTE: Excavation suspended at
water table. Well points
needed to complete excavation
of this feature

MAP REFERENCE: 10

PAGES IN VOLUME: 78, 79

PHOTOGRAPHS:

SECTION ON REVERSE SIDE



103N91E

↑
N

FEATURE RECORD

FEATURE NO. 13

REG. NO. FOLENS BEE

SHEET NO. 5A-26-1

DATE 5/27/74

LOCATION: excavation unit 106N103E

size & approximate location app. 1 1/2 m. across

depth from surface: top _____
base _____

depth from datum: top 2.45
base 2.70

DEFINITION: dark brown
trash pit

ASSOCIATED MATERIAL:

Fea. 8, Fea. 2, P.P.H. G, H, I.

MATRIX & STRATIGRAPHY:

below Fea. 2 & Zone II, Lul. II,
surrounded by Fea. 8 + bulk.

1) Field Specimen nos.: 85

2) Other Features (Fea. 8) matrix

3) Other:

MAP REFERENCE: Map 6

PAGE IN NOTES: 81 + 82

PHOTOGRAPHS: No

SKETCH ON REVERSE SIDE

FEATURE RECORD

FEATURE NO. 14RECORDER BortnickSITE NO. SA-26.1DATE 2 June 76
Cyber-E unitLOCATION: excavation unit 103N 106Esize & approximate location of E.depth from surface: top .89
base _____depth from datum: top 237
base _____

DEFINITION:

Large concentration
of dark soil, shell, shredsASSOCIATED MATERIAL: Zone II Level II

MATRIX & STRATIGRAPHY:

intrudes into sterile
below aquifer rubble

1) Field Specimen nos.:

2) Other Features:

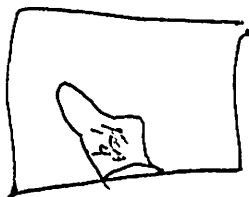
3) Other:

MAP REFERENCE: MAP 11PAGES IN NOTES: 91

PHOTOGRAPHS:

SKETCH ON REVERSE SIDE

103
106



11
11

DATE: 15

LOCATION: Binkley

NO. SA-26-1

22 JUN 76

103 91
LOCATION: excavation unit ~~91A~~ 103 E

size & approximate location SE corner of
square ca. 75 m
diameter

depth from surface: top 0.79 m
~~2.70~~
base ~~2.70~~

depth from datum: top 2.30
base 3.49

DEFINITION:

~~Pit E and Feature 15 are~~
connected. Dark gray charcoal
& shell - Flecked semi-circular pit

ASSOCIATED MATERIAL:

MATRIX & STRATIGRAPHY:

Underlies Feature 11 &
intrudes into sterile

1) Field Specimen nos.:

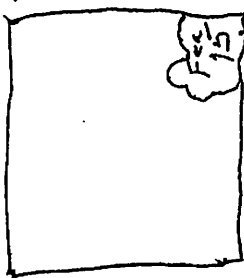
- 2) Other Features: Pit E & Fca 15
connected
3) Other:

MAP NUMBER: 10

PAGES IN VOLUME: 100 - 101

PHOTOGRAPHS: 140

N



FEATURE RECORD

FEATURE NO. 16RECORDER HerronSITE NO. JA-26-4DATE 6/23/76LOCATION: excavation unit A103N103E, size & approximate location E half of S walldepth from surface: top 1.94
base _____depth from datum: top 1.94m
base _____

DEFINITION:

coquina block and
rubble complex in
E half of S wall.

ASSOCIATED MATERIAL:

MATRIX & STRATIGRAPHY:

Base of Zone I - below
modern building rubble

1) Field Specimen nos.:

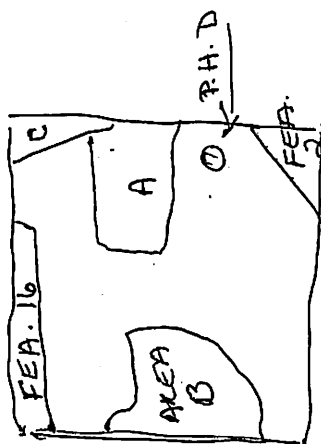
2) Other Features:

3) Other:

MAP REFERENCE: Map 12PAGES IN NOTES: 103, 104

PHOTOGRAPHIC:

SECTION ON REVERSE SIDE.



1 N

FEATURE RECORD

FEATURE NO. 17

RECORDED

Kitty Adams

SITE NO. 5A-26-1

DATE June 24, 1976

LOCATION: excavation unit II 100 N 94 E, size & approximate location 2m along E-Su

depth from surface: top 06
base .46

depth from datum: top 1.68
base 1.94

DEFINITION:

possible coquina block wall

75#136 - material with coquina wall itself
material under wall will be bagged separately w/ its own 75 #.

MATRIX & STRATIGRAPHY:

within zone I, intruding into
zone II level

ASSOCIATED MATERIAL:

1) Field Specimen nos.: 136

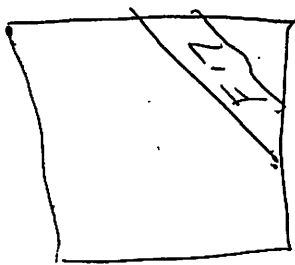
2) Other Features:

3) Other:

MAP REFERENCE: 13

PAGES IN NOTES: 108-109, 121-123

ILLUSTRATIONS: #20



22

FEATURE RECORD

FEATURE NO. 18RECORDER K. AdamsSITE NO. 54-26-1DATE June 26, 1974
almondLOCATION: excavation unit II 100 N 4 E, size & approximate location NW 1/4 IIdepth from surface: top .44
base _____depth from datum: top 1.99
base 2.41 (level I)
3.38 (level 2)

DEFINITION:

irregular L shaped area
of yellow, grey, and brown mottled

NEW EXTENT- ALONG S WALL TO SE CORNER

LITHIC & STRATIGRAPHY:

~~intruder~~ - intruder from zone I

to zone II level 1

Feature 18 closed out 7/16/74 when
13 bags of material recovered
since it is a 19th century feature
& time is running out - recovery will
stop. Closed prematurely.

ASSOCIATED MATERIAL:

post hole B ~~intruder~~ intruder

- 1) Field Specimen nos.: 179
level I #147, 162 - level 2
- 2) Other Features: • INTRUDED ON B1
PH. B; FEATURES 17, 19 AND
- 3) Other: POSSIBLY 22 ITSELF
is ~~not~~ intruded on by Zone 2
level 1, 3 & 4 - see S 1/2
- MAP REFERENCE: 13, 17

PAGES IN BOLS: 108-109; 126-127, 129

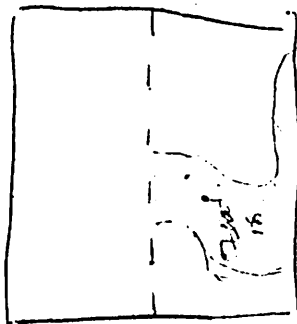
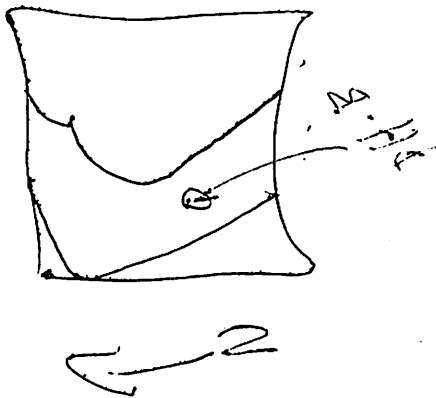
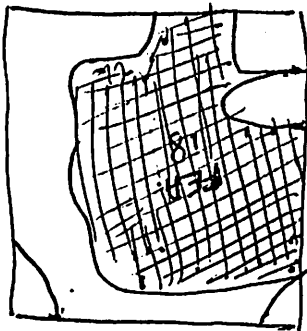
PHOTOGRAPHS:

COMMENTS

FEA 18 WILL BE EXCAVATED
FROM 1.99-2.31 AS FEA 18
LEVEL I AND ASSIGNED FEA

7/26/10 - 11/20/10 12

found concrete in 5' 1/2"
of excavation - gravel
underneath 15'-9" 79



NEW EXTENSION OF
FEATURE 18
TOP - 2.17
BASE -

FEATURE RECORD

FEATURE NO. 19RECORDER K. J. J.SITE NO. SA-26-1DATE June 24, 1976
along W wallLOCATION: excavation unit 17100 N 94E, size & approximate location and 1/2 of NW wa
N 1.95depth from surface: top .45
base see back of pagedepth from datum: top W 2.0
base see back of page

DEFINITION:

dark gray possible trench.
L shaped in NW walls.
junction in NW cor. 8"

MATRIX & STRATIGRAPHY:

~~Dark gray possible~~
~~trench~~
intruders from zone
I to zone II level
- see reverse page

ASSOCIATED MATERIAL:

~~foot print~~1) Field Specimen nos.: ~~130~~ 130, Level I
133, Level II

2) Other Features:

3) Other:

MAP REFERENCE: 13

PAGES IN NOTES: 108-109

PHOTOGRAPHS:

SKETCH ON REVERSE SIDE

at lower level of feature 19,
colonial material was abundant; while
in upper level later material was
present; therefore, level 1 of feature
19 was arbitrarily closed &
assigned F.S. # 130

level 1 of feature 19:

top 1.97

Base in W. leg 2.43

Base in N. leg 2.37

Level II will be

2.37 M.B.D

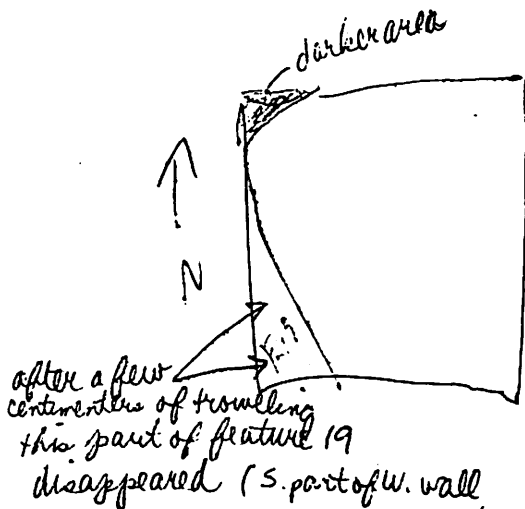
to
base of feature

Closure of Fea 19: Base is variable in different
portions of fea; at S end of W arm 2.49,
at N arm 2.38, at center of W arm 2.58

Fea 19 removed in 2 levels: Level I - top to 2.37 M.B.D.
FS

Level II - 2.37 to base FS

Fea 19 now appears after excavation to have been 3 separate pits - unfortunately combined into 2 FS's



FEATURE RECORD

FEATURE NO. 20

RECORDED BY K. Johnson

SA 26-1
28 June 1976

LOCATION: excavation unit D102 N106E, size & approximate location SW 1/4

depth from surface: top 1.02
base 1.05

DESCRIPTION: rectangular, trench-like

area of dark-brown shell flecked
soil

NOTES: STRATIGRAPHY: within

Zone 3, below Feature 2

appears to have been a shallow lens
of dark soil rather than a significant
cultural feature
in SE corner of Feature 20 at base or poss.
post hole PH K

Field Specimen Nos.: 120

Other Features: PH K in base

Other:

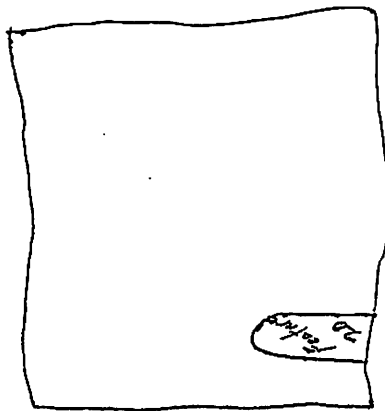
MAP REFERENCE: 9

PAGES IN LOG: 112

REMARKS:

SCALE OF PHOTOGRAPH

Map 9



10901
10902
10903

2

STRUCTURAL RECORD

FEATURE NO. 21

RECORDED BY

J. W. M. Smith

FILE NO. SA-26-1

DATE 29 June 1976

LOCATION: excavation unit □ 103N ~~103E~~ 103E site & approximate location NE 1/4

depth from surface: top 0.66 m
base 2.74 m

depth from datum: top 2.26
base 4.40

DEFINITION:

*circular area of dark gray
compact soil - well*

ASSOCIATED MATERIAL:

Level 1 FS# 121
0-10 cm

MATRIX & STRATIGRAPHY:

*at base of Zone 2 Level 1
(several areas and features
intertwined)*

1) Field Specimen nos.:

Level 2 FS# 122
10-20 cm

- 2) Other Features:
for 20- well construction
3) Other: *P.T.*

LEVEL 3 FS#
20-30 cm

MAX DIMENSION: 12

Ext 1

PAGES IN VOLUME: ~~113~~ 113 f

PHOTOGRAPHS: 25, 26, 27, 28

*close feature 2 BE 90 dimension
20x69*

RECORD ON FRONT OF RECORD

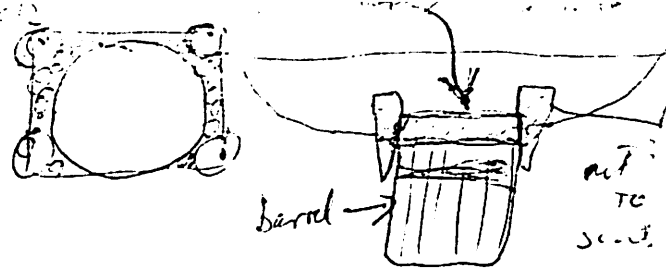
*Feature is elaborated in 10 cm levels in case it
is a well. Each 10 cm level gets a different*

*FS #
feature appears rectangular
re map on map 16 at*

~FS #1 (cont'd)

Level 4	30-40 cm	FS 157
" 5	40-50 "	FS 158
" 6	50-60 "	" 159 (base 2.90 mbd)
" 7	60-70 "	" 161 (points sunk)
" 8	70-80 "	" 162
" 9	80-90 "	" 165 (mapped at this level)
10	90-100 "	" 166 - (from this level on material is from inside barrel)
11	100-110	167 - base 3.47
12		168
13		169
14		170
15		171
16		172 - to sterile

wood from square casing - 173
wood corner joints 174



Construction info:

□ wood casing w/ corner joints
& barrel inside
wood casing top: 3.35 mbd
well barrel - 78 cm diameter
27 staves

base of well fill - 4.00 mbd
base of well barrel - 4.90 mbd
base of well pit adjacent to well
well casing - a) 70 x 70 x 80 x 3.22 mbd
b) 70 x 70 x 80 x 1.5 cm

W/TYPE RECORD

FEATURE NO. 22

RECORDED

A. M. Everett

DATE SA-26-1

29 June 1976

LOCATION: excavation unit D03N 1035, size approximate location Center

depth from surface: top 0.66
base 0.87

depth from datum: top 2.25
base 2.46

DEFINITION:

*irregular circle of dark gray
compact soil*

ASSOCIATED FEATURES:

MATRIX & STRATIGRAPHY:

*began at top of Zone 2 Level 1
after excavation round, very regular
and bottoms out, in muddled sand
rather than sterile ~~pos.~~ feature*

1) Field Specimen pos.:

2) Other Features:

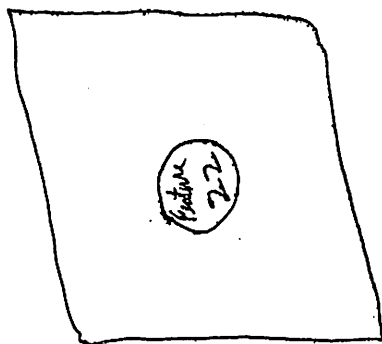
3) Other:

MAP REFERENCE: 12

PAGES BY FOLIOS: ~~113~~ 113

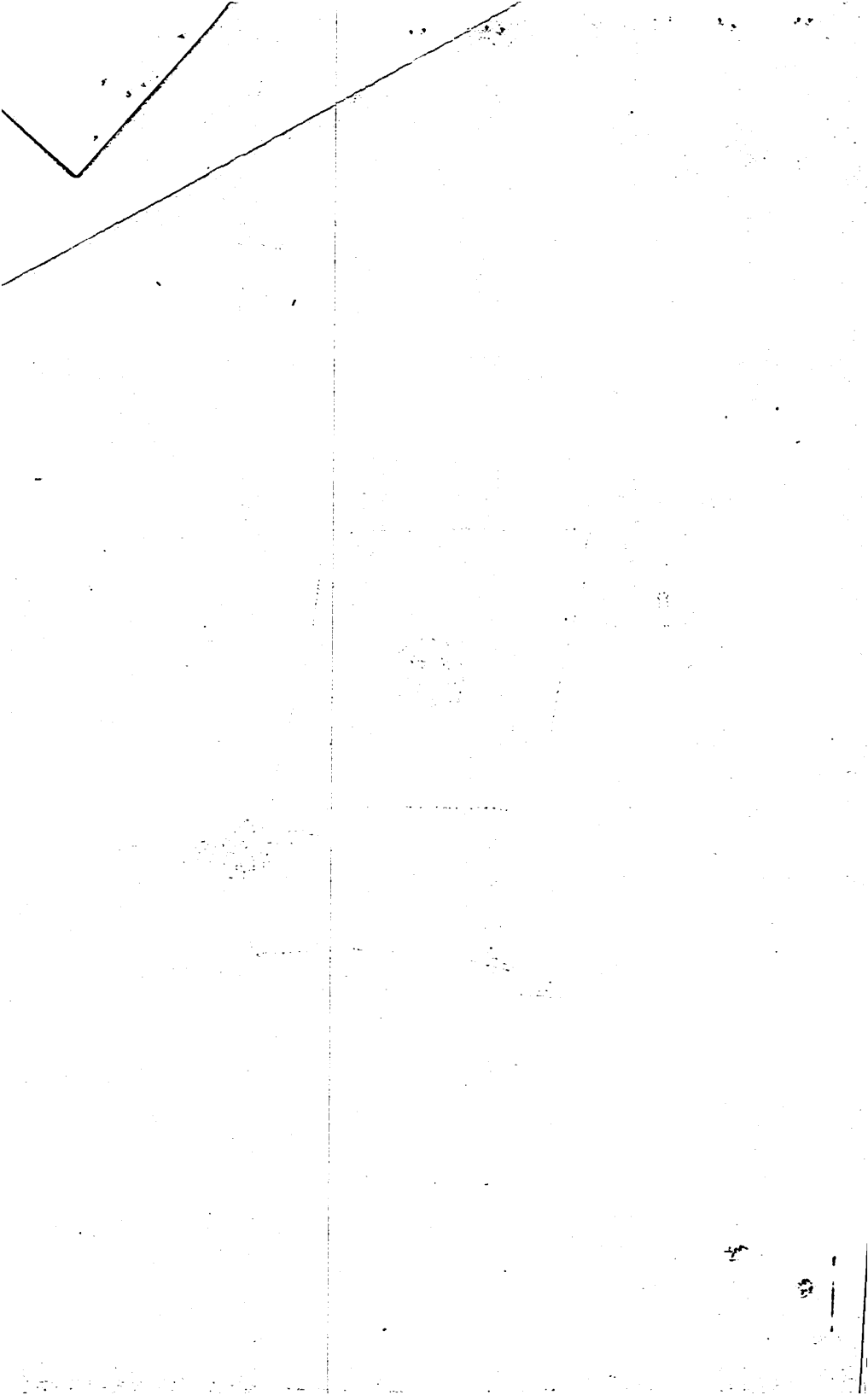
PHOTOGRAPHS:

SECTION OF STRATIGRAPHY



2
3
10
11

2



SECTION 23

HERSON

26-1 7/1/36

LOCATION: excavation unit 103N/103E

depth from surface: top

base

DESCRIPTION: irregular light brown

whole shell packed sand stone

NE ~~SEE~~ OF ~~□~~
CENTRE

WATER & SURROUNDING:

APPROX AT TOP OF ZONE 3

*NOTE - FEATURE 23, AFTER EXCAVATION
PROCESSED AS ONLY A LENS OF
LIGHTER COLOURED SOIL

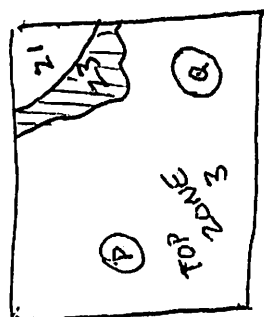
NO. 14

NO. 124

FIELD SPECIMEN NOS.: 142
OTHER FEATURES: ADJACENT TO FEA
22

FEA 22

depth from ground: top 2.62
base 2.36



1 1

FEATURE RECORD

FEATURE NO. 24

REMOVED

PERKY

DATE SA-26-1
9/12/76

LOCATION: excavation unit D 100 N 94 E

size & approximate location

depth from surface: 100

depth from center: 243

base

base 2.58

DESCRIPTION: south half of east wall - irregular
part of black soil @ heavy gravel &
actual concentration

ASSOCIATED FIELD NO.

MATRIX & STRATIGRAPHY:

111) Field Number nos. 164

~~Zone I~~
Includes into zone II, level III
1/2 way into zone II

2) OTHER FEATURES:

3) OTHER:

MAP REFERENCES: # 17

PAGE 17 TOTAL 137-188

137-188

